

# MONSTER TRUCK

## ASSEMBLY INSTRUCTIONS



Time to Complete: Approximately 30 minutes    Level: Medium

### GETTING STARTED

#### MATERIALS:

- Metal-edged ruler
- Butter knife
- Scissors or X-ACTO knife
- Cutting mat (optional)
- Multipurpose glue
- Hole punch
- Pencil

**1** Score all the pieces: Using a ruler as a guide, run the back side of a butter knife firmly along dashed and dotted lines.



**2** Using scissors or an X-ACTO knife and cutting mat, cut out pieces along solid lines.



**3** Take the tip of a pencil and carefully poke through the X's on wheels.

**4** Fold all pieces along score lines, using the folding key below as a reference.

Mountain Fold

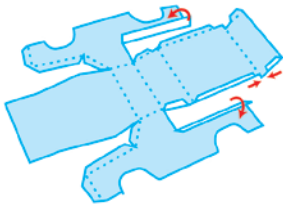


Valley Fold

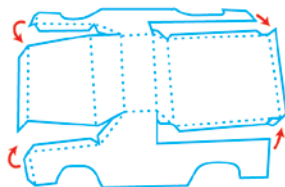


### ASSEMBLE YOUR MONSTER TRUCK

**5** Truck body: Fold down and glue truck bed sides and rear panel.



**6** Fold down each side of truck body and glue all tabs in place.



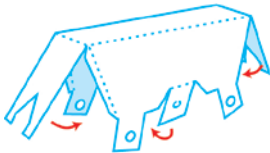
**7** Suspension: Fold over and glue tabs A.



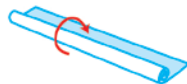
**8** Punch a hole through the white circle on each tab A.



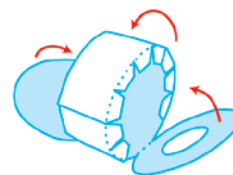
**9** Fold front and back of suspension inward and glue to tabs B. Fold underside over and glue to tab C.



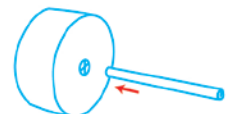
**10** Axles: Roll axle pieces into thin tubes (smaller than the width of a pencil) and glue. Make sure axle is narrow enough to turn in holes in the suspension piece.



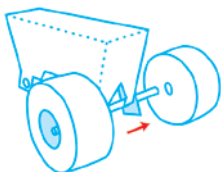
**11** Tires: Curl a tire panel around and glue the end to tab D. Fold up sides of tire and glue to tabs. Repeat for all four tires.



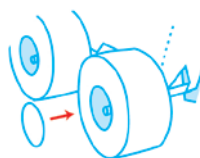
**12** Add glue to grey area of an axle and insert into a tire around the X. Align tire with grey section of axle.



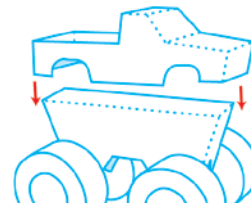
**13** Insert other end of axle through holes in the suspension. Add glue to other grey area of axle and insert into a second tire at the X.



**14** Repeat steps 12 and 13 for second set of tires. Glue a hubcap onto the outside of each tire.



**15** Glue bottom of truck bed to top of suspension. Make sure the truck and suspension are centered.



**16** You're done!

