

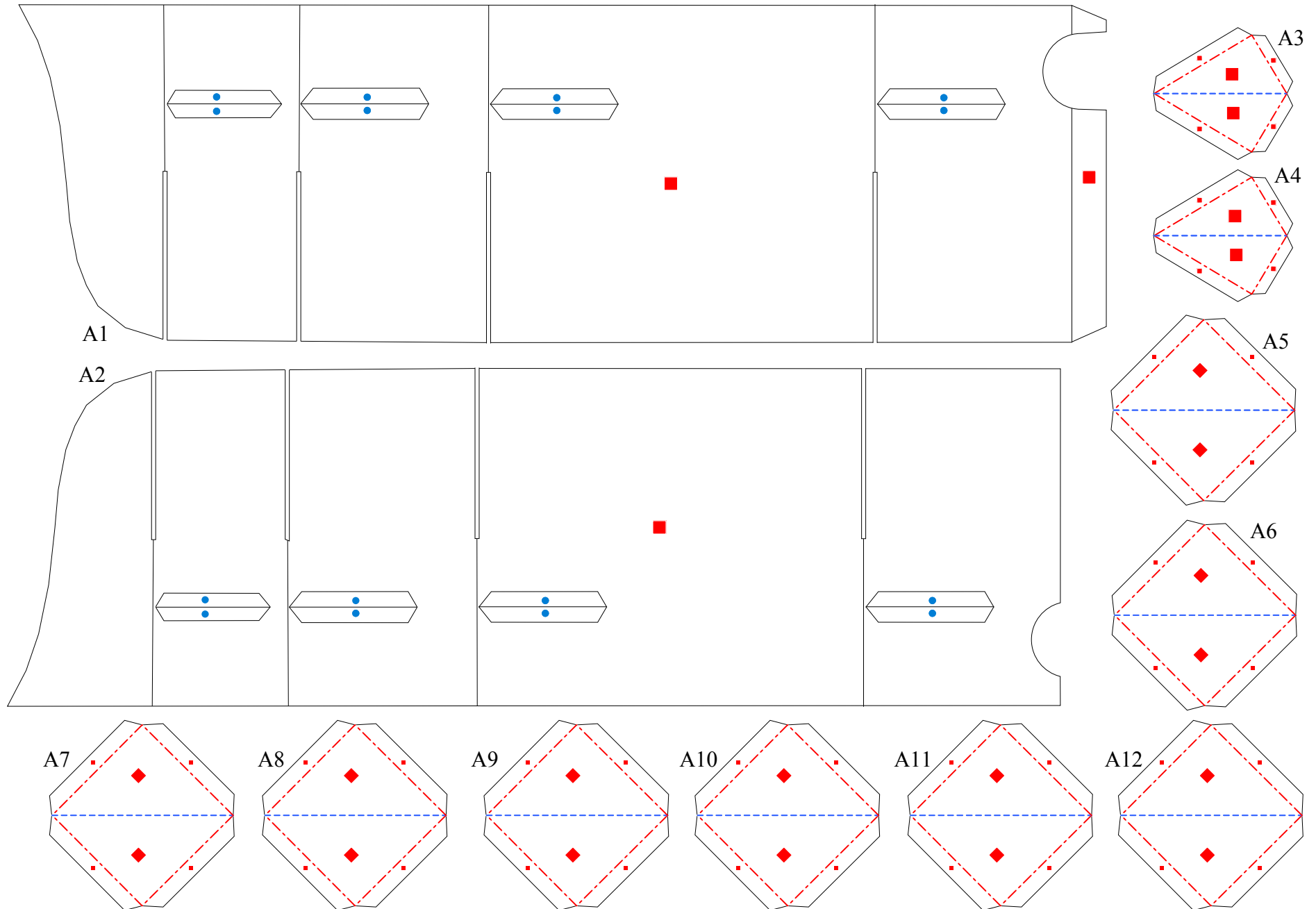
Paddle Steamer (Sidewheeler)

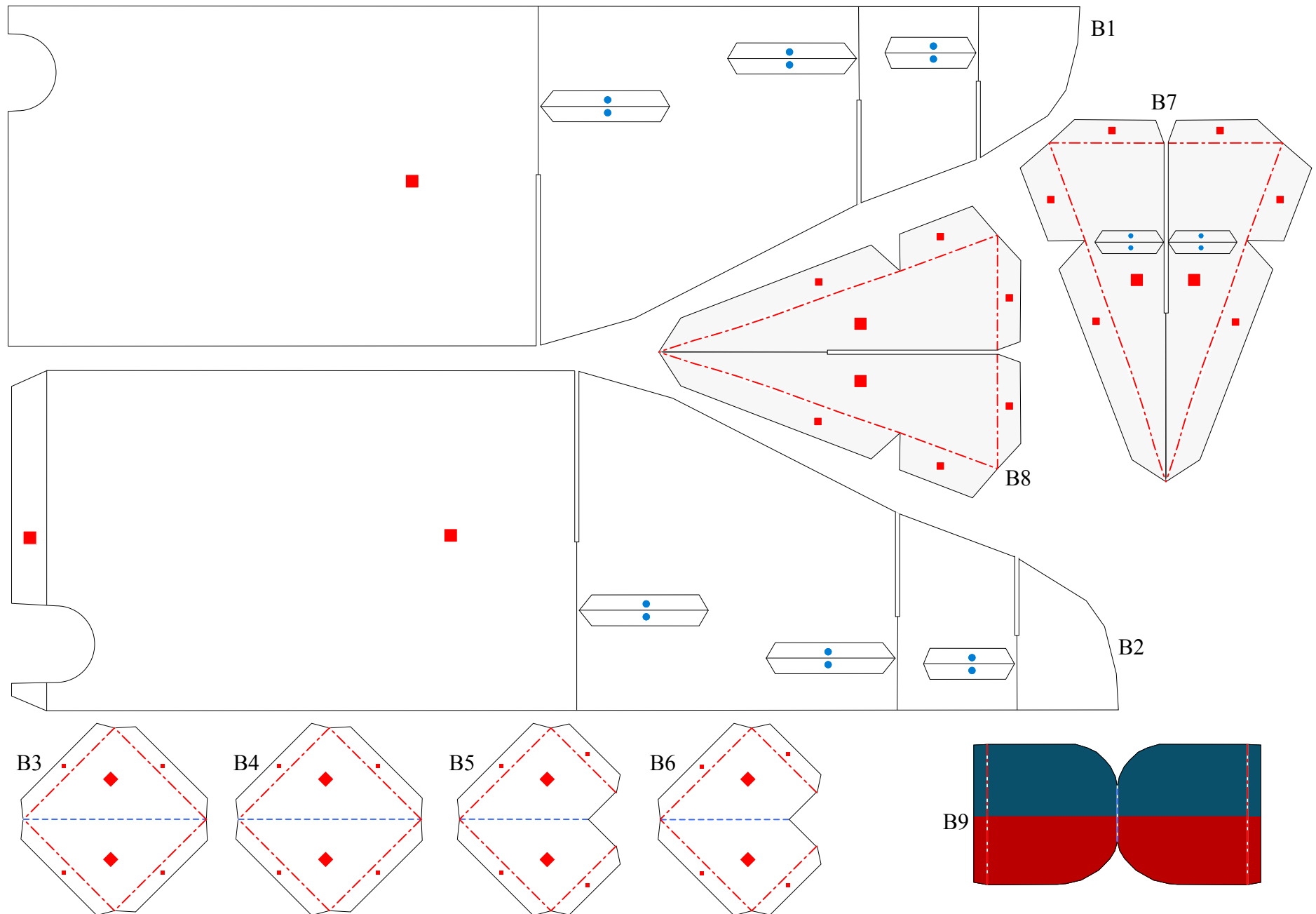
Completed Model (Total length)	About 410mm
(Total width)	About 130mm
Pattern	21 pages
Assembly Instructions	10 pages

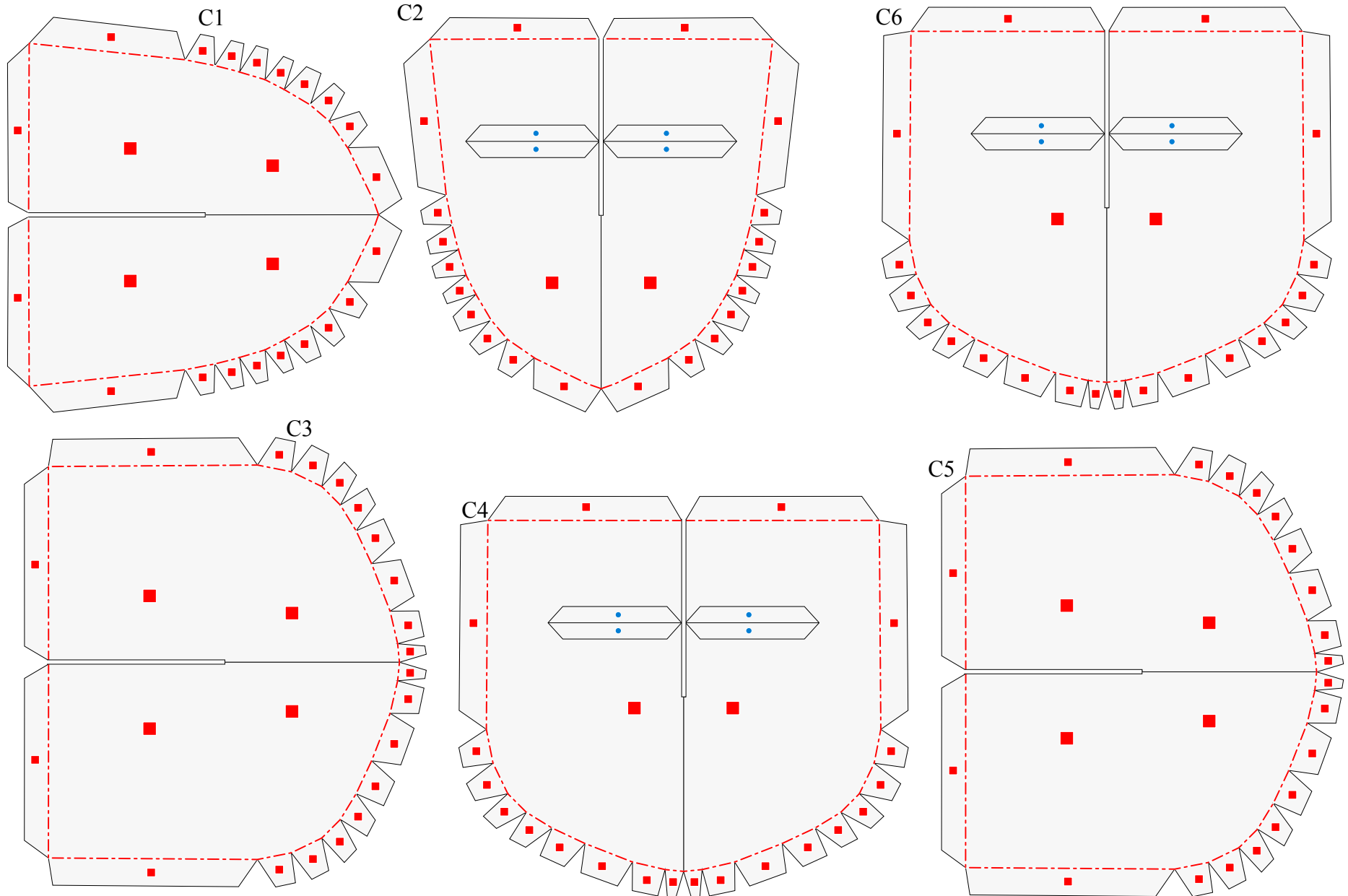
A paddle steamer is a boat with paddle wheels on the sides that are turned by a steam engine, propelling the boat forward. A paddle steamer on the ocean or a river is quite an impressive site, with its paddle wheels turning away and black smoke puffing out of its large chimney. In the old days, boats needed people to make them move through the water, or sails, which require technical operation, but in the latter half of the 18th century when the steam engine was utilized, the paddle steamer was developed. In the mid-19th century, with the improvement of the steam engine, and utilization of the screw propeller, the number of paddle steamers being produced began to drop. There are two types of paddle steamers: sidewheelers, which have paddle wheels on both sides, and sternwheelers, which have a single wheel at the back. This paper craft model is based on the sidewheeler type.

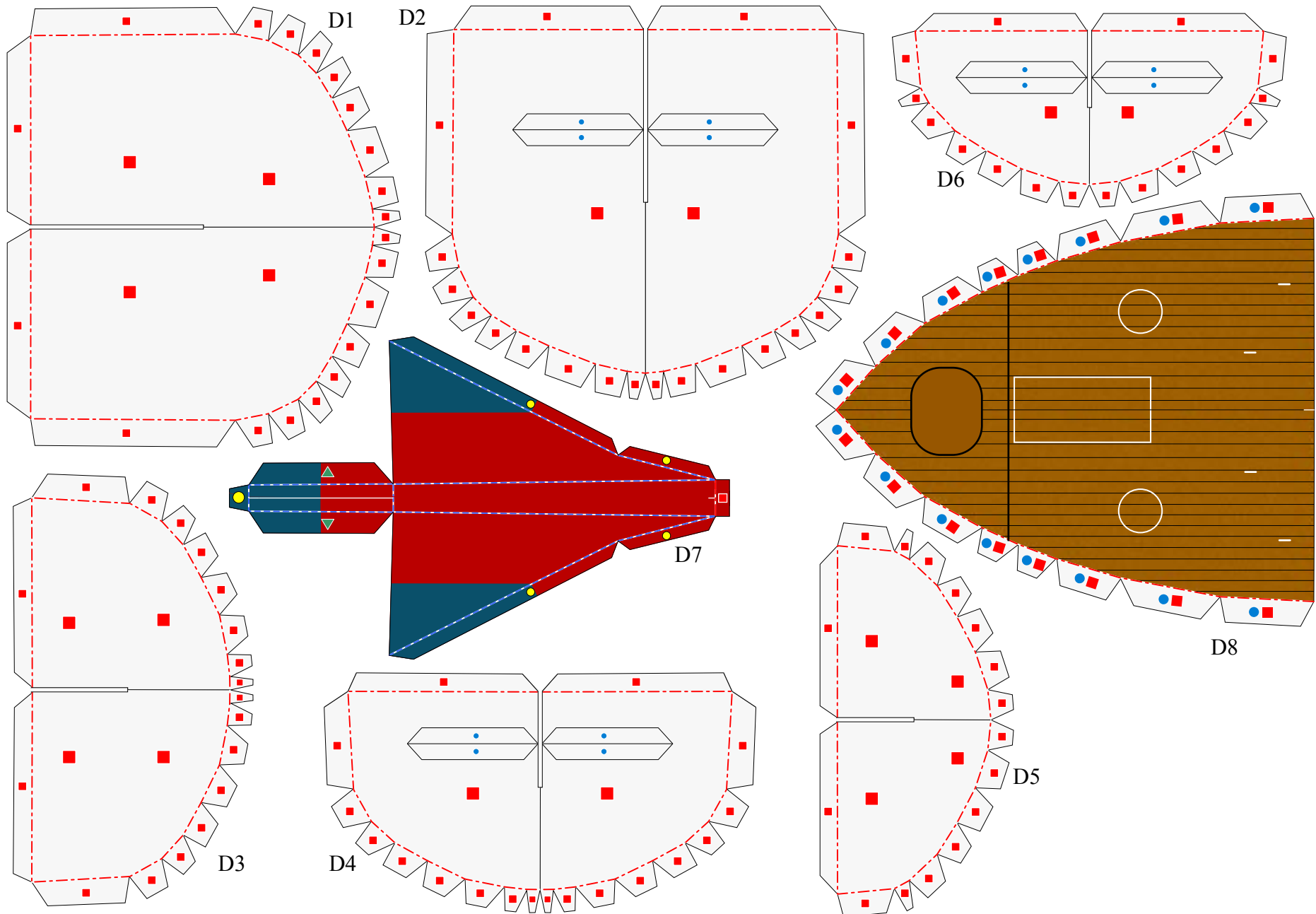
*Build the model by carefully reading the Assembly Instructions, in the parts sheet page order.

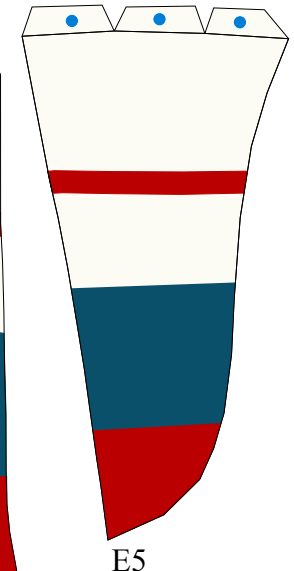
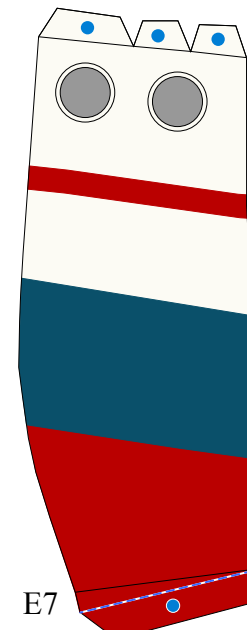
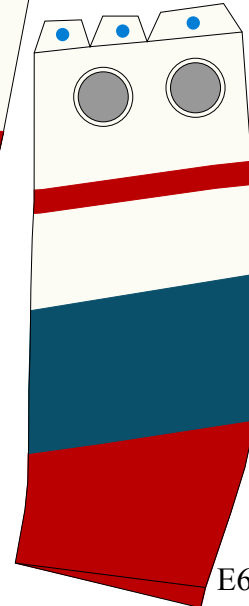
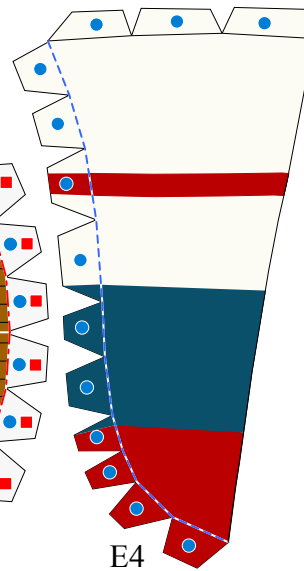
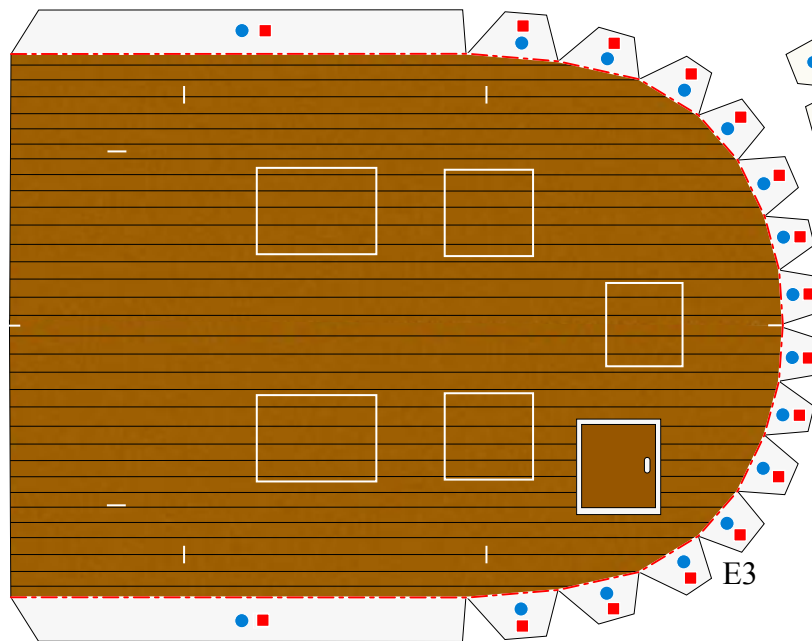
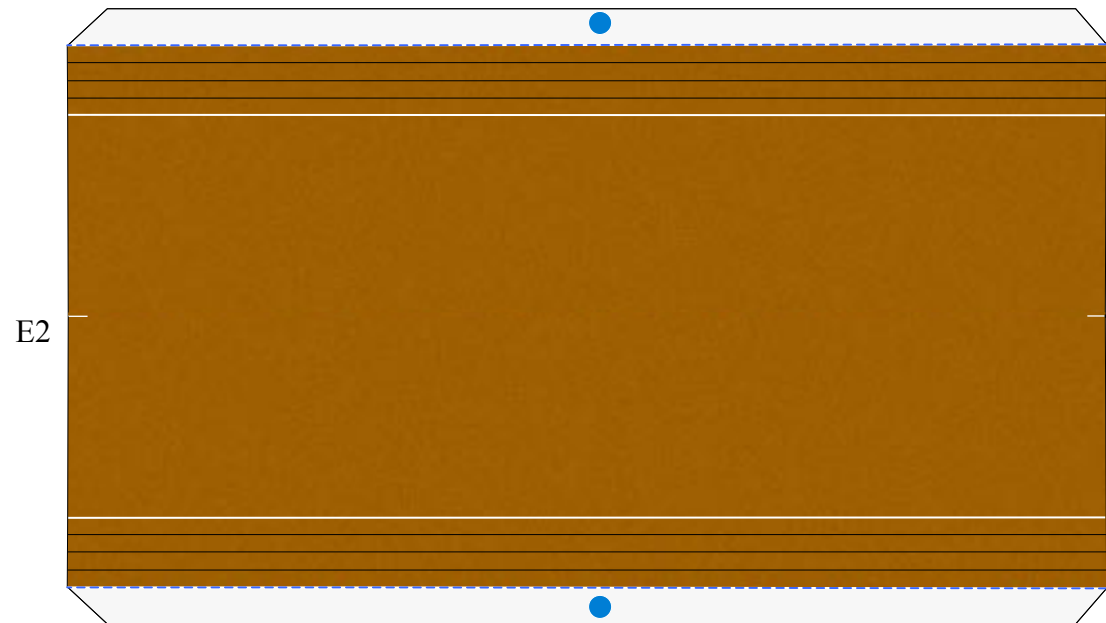
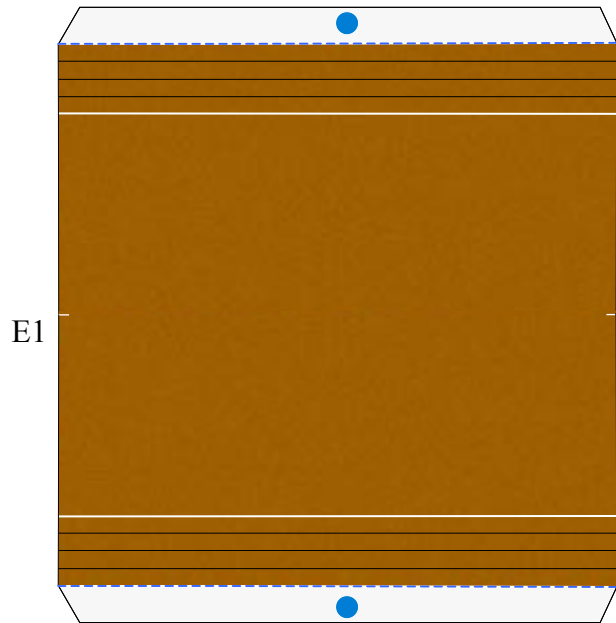


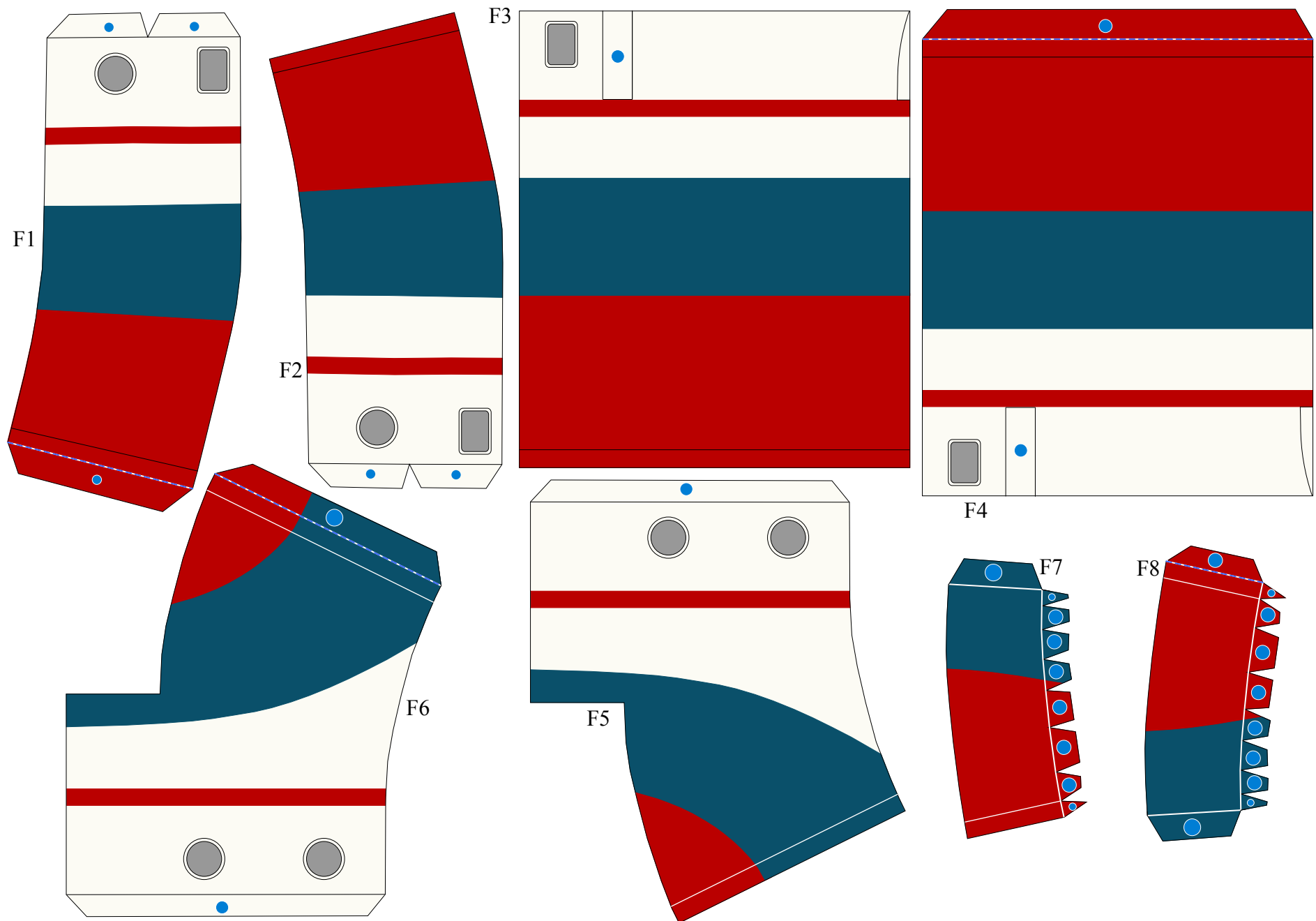




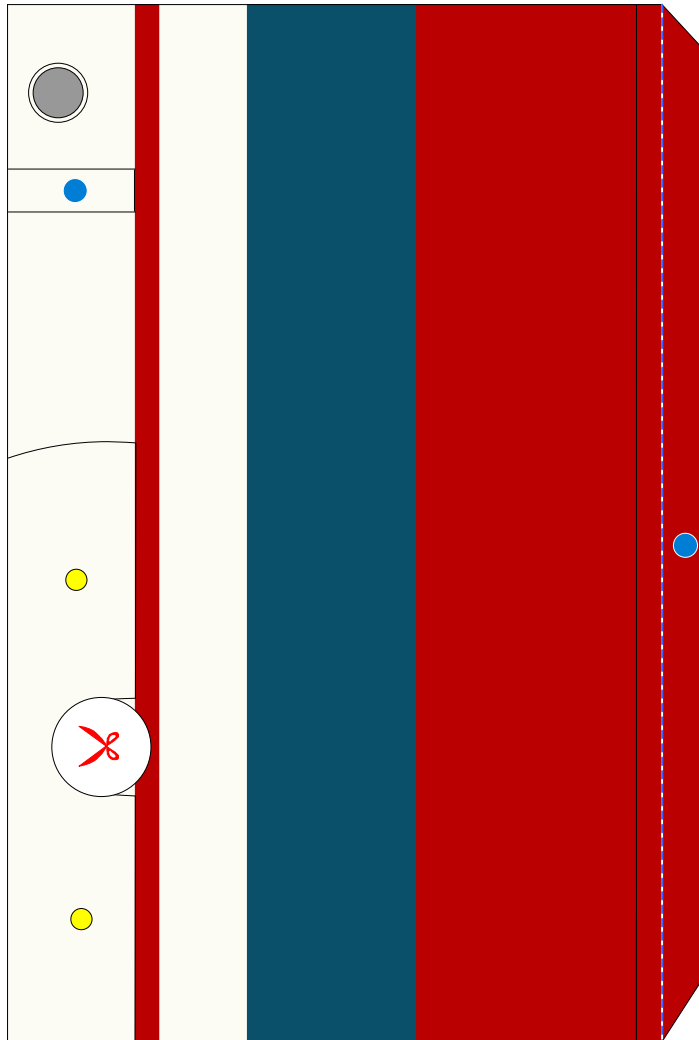




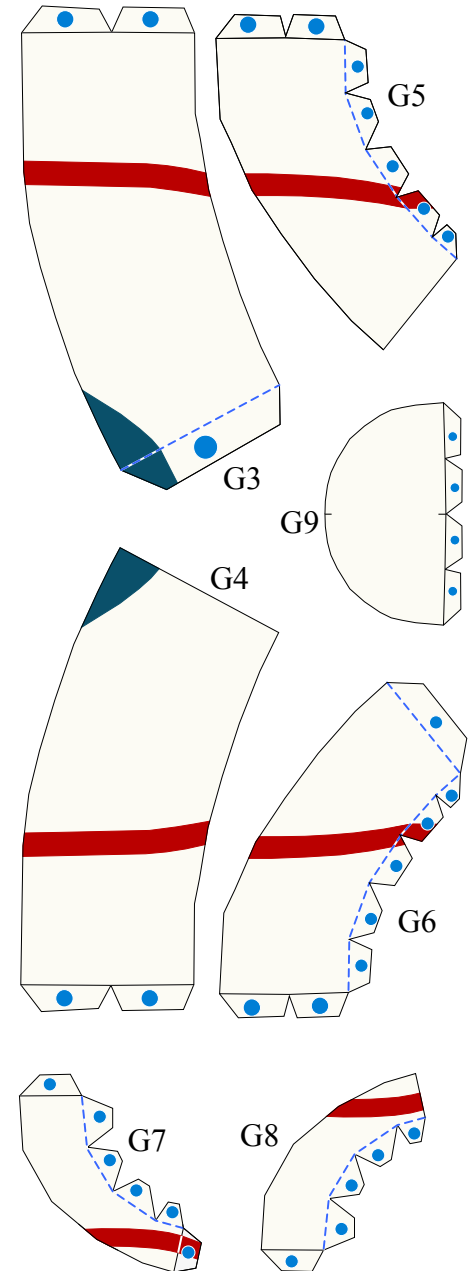
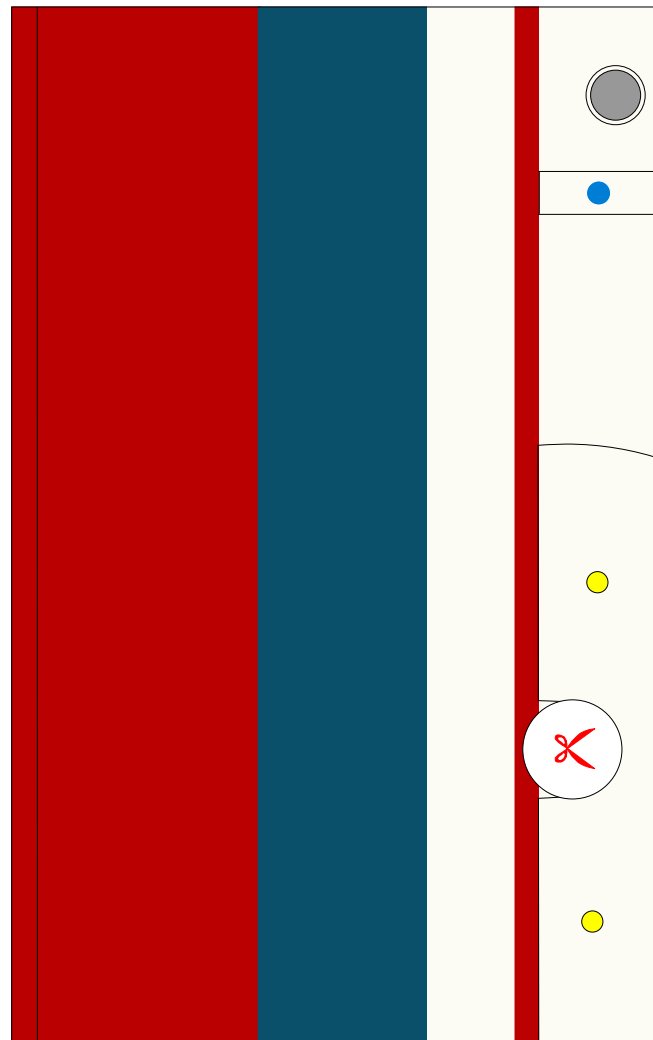


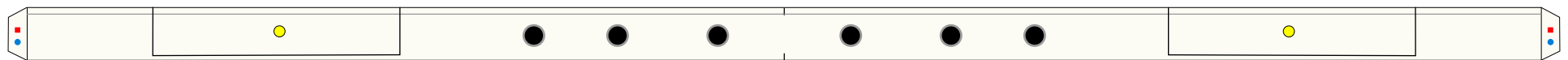
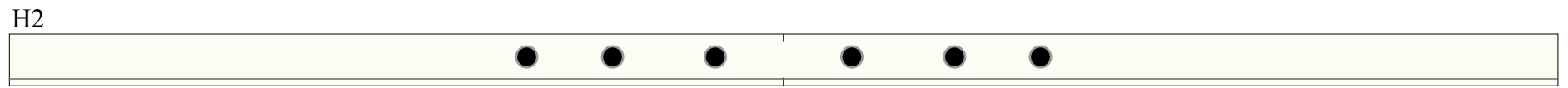
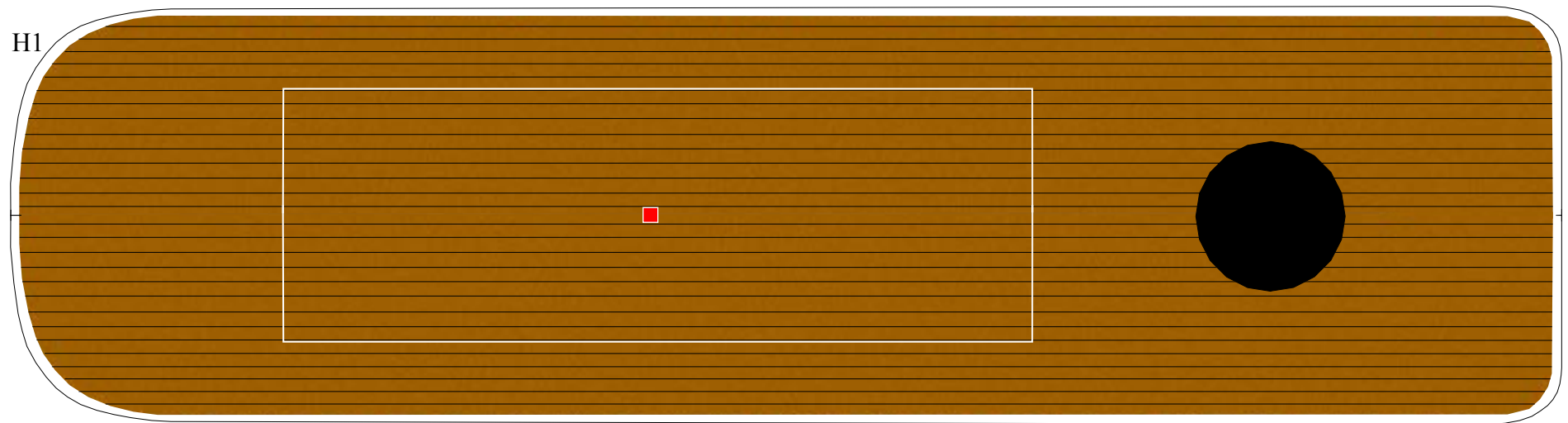


G1

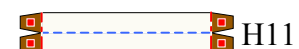
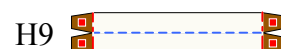
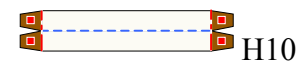
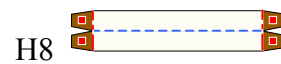
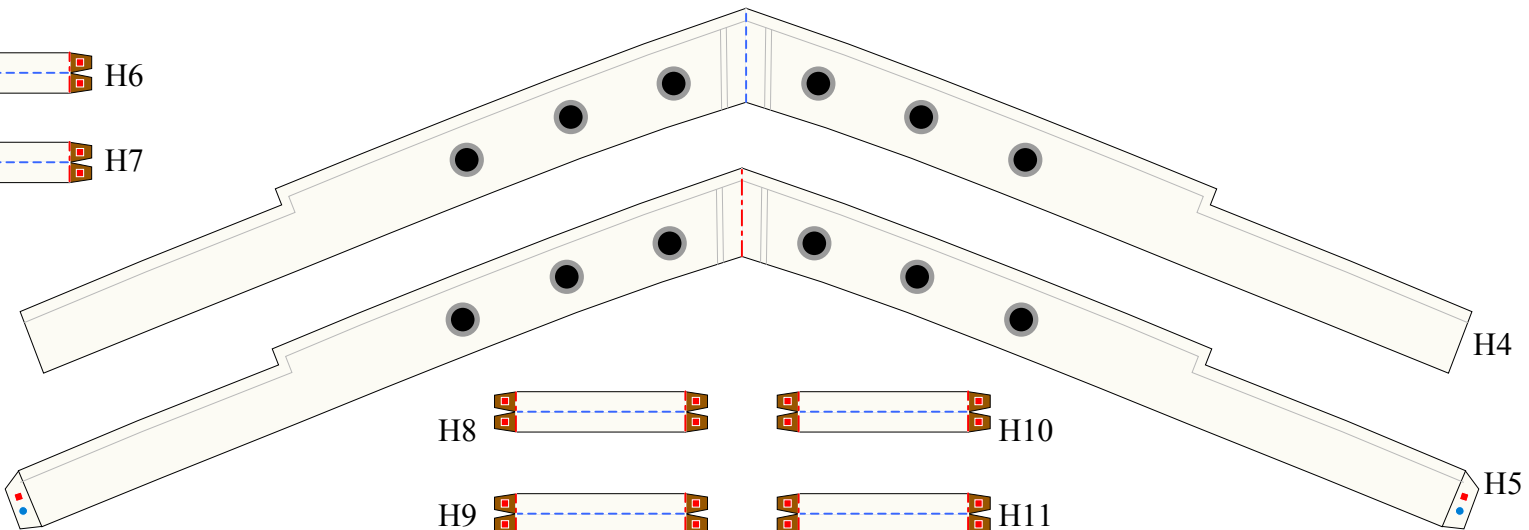
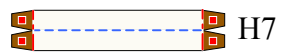
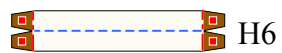


G2





H3



H4

H5

